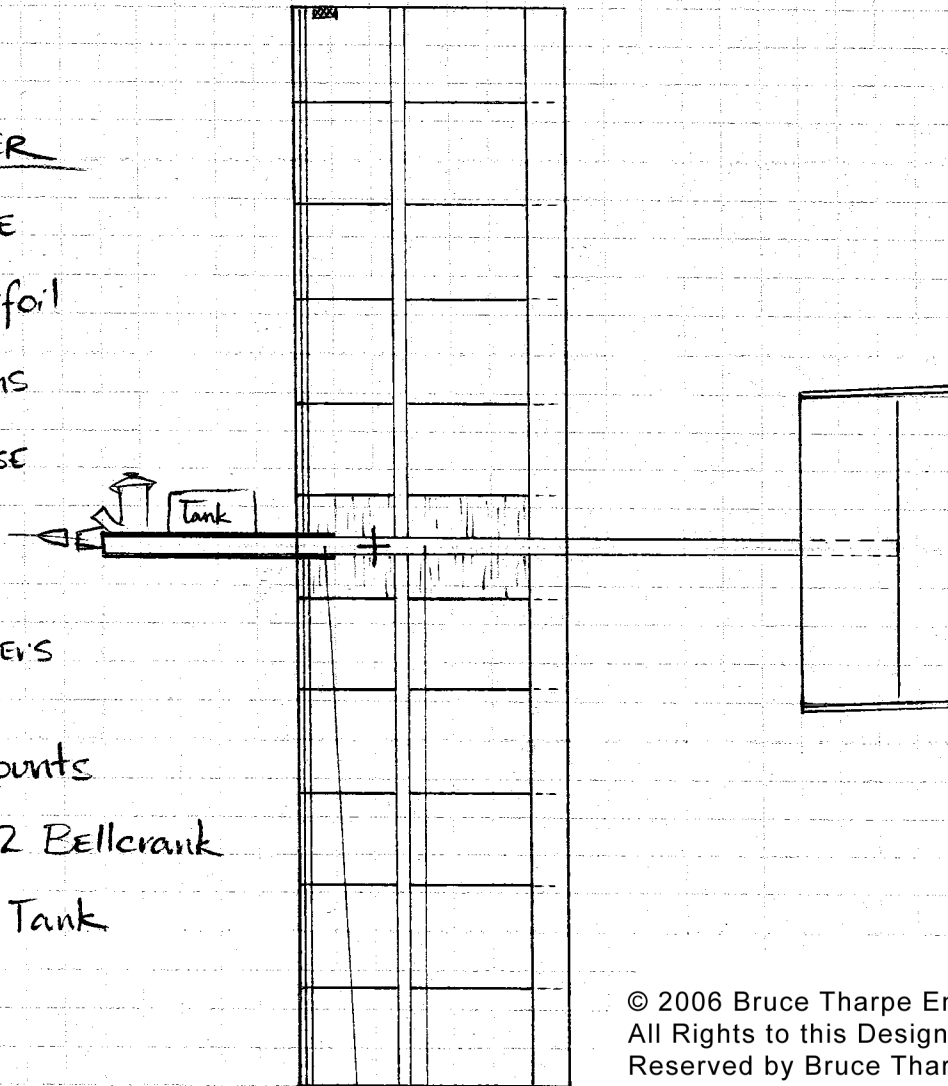


C/L STUNTER

- For .09 Engine
- $\frac{1}{4}$ " Thick Airfoil
- $\frac{3}{32}$  Stab, Fins
- $\frac{3}{8}$  Balsa Fuse

- $\frac{1}{16}$  Ply Formers
- $\frac{3}{8}$  sq Spruce Engine Mounts
- Perfect #222 Bellcrank
- Perfect #8 Tank
- $1\frac{3}{8}$  Wheels
- $\frac{1}{8} \times \frac{1}{4}$  Hard Balsa Spars
- 7x4 Prop



© 2006 Bruce Tharpe Engineering  
All Rights to this Design Concept  
Reserved by Bruce Tharpe and BTE.

-  $\frac{1}{4}$  sq L.E.

- Build 2 at a time

-  $\frac{1}{16}$  MW Tailskid

- Tip Weight, Out-turned Fins, Side Thrust, Swept-back leadout

- Engine Cutout:  $\frac{7}{8}$ " x  $1\frac{1}{2}$ "

-  $\frac{1}{16}$  Center Sheeting

